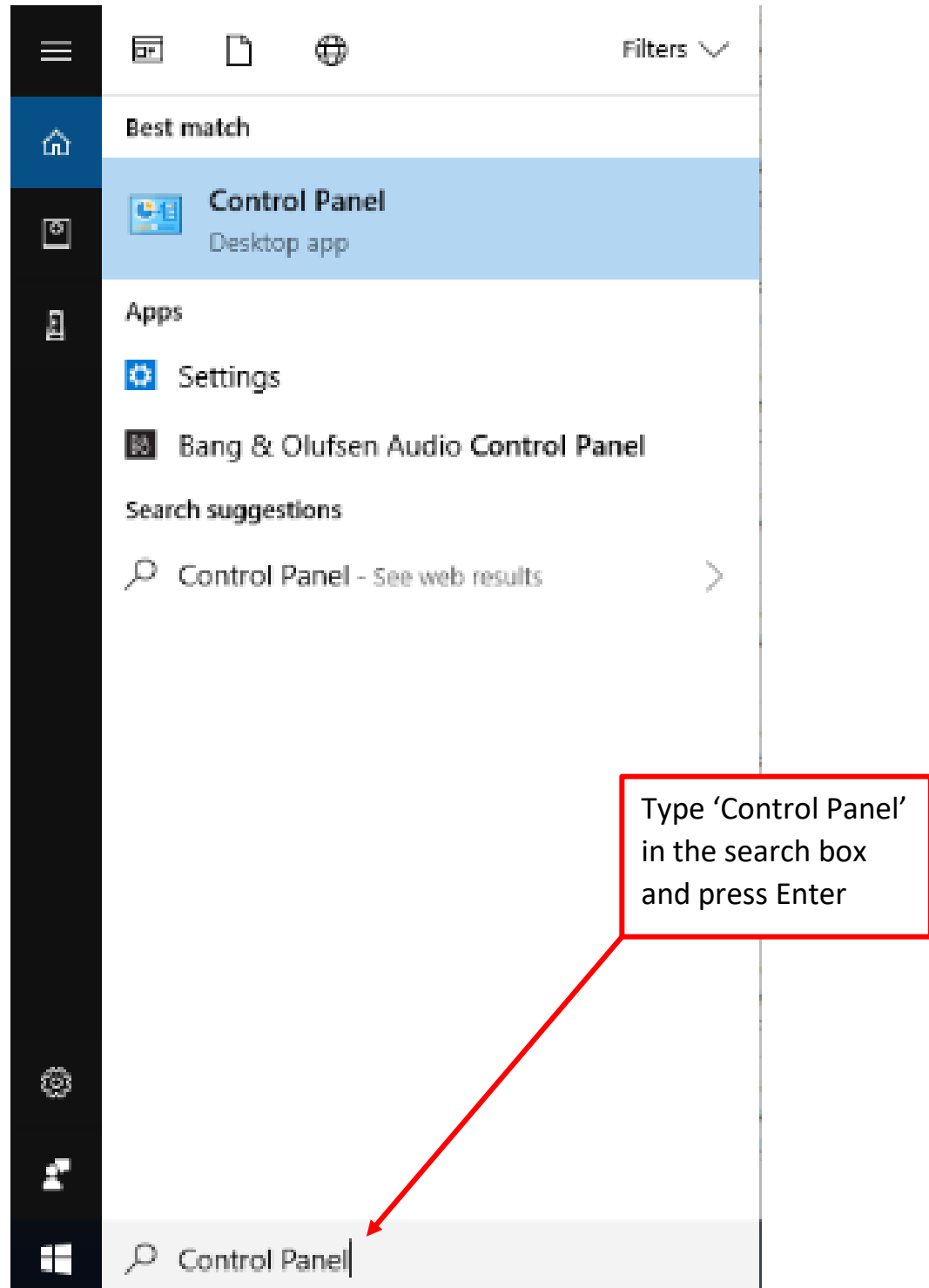


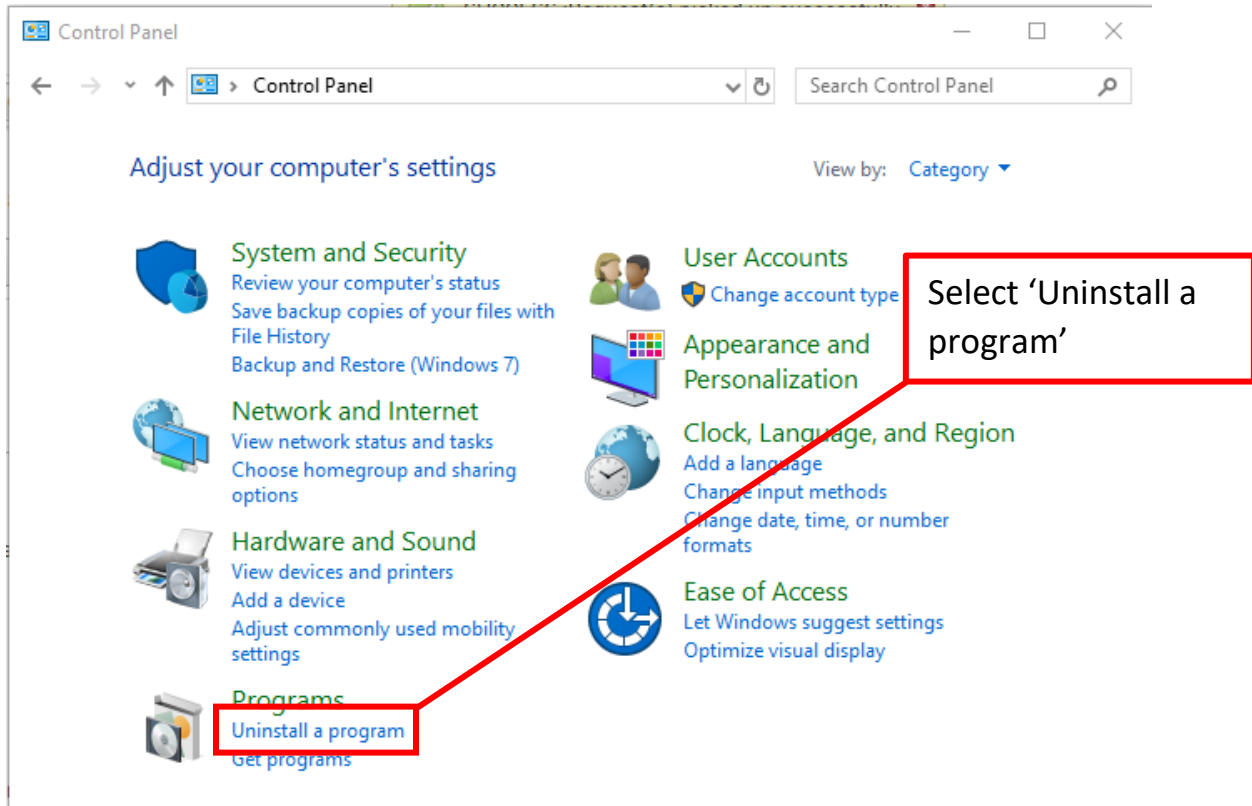
## How to Uninstall Panini scanner drivers

**Before proceeding: Ensure the scanner is NOT plugged into the computer.**

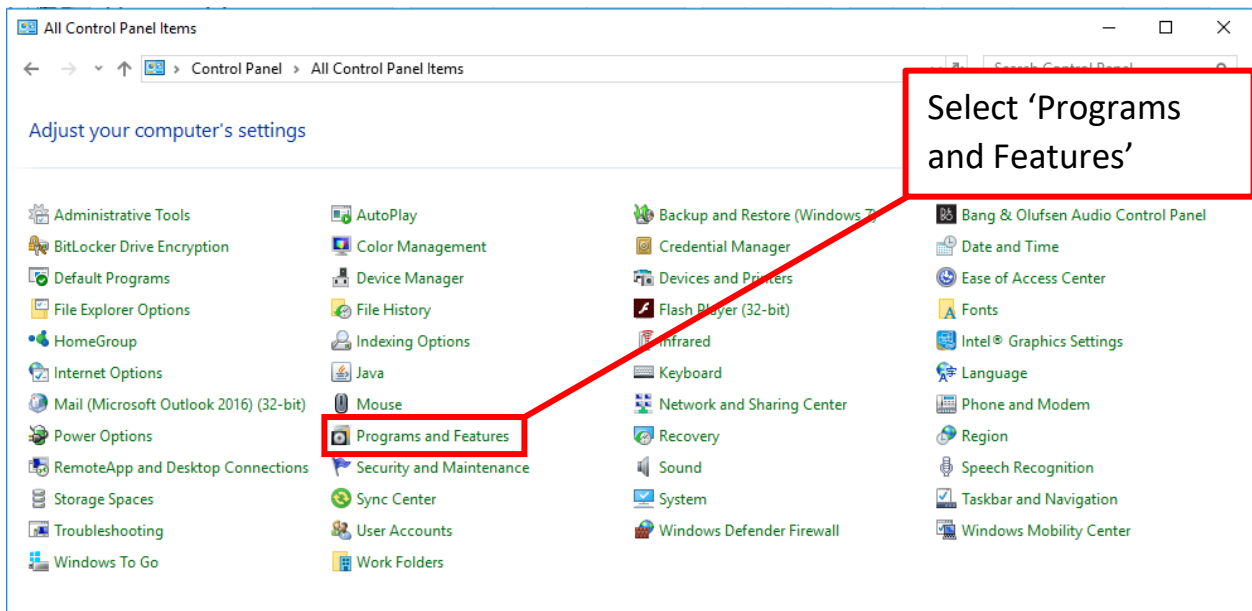
1. From the start menu, type "Control Panel" in the search bar and press enter



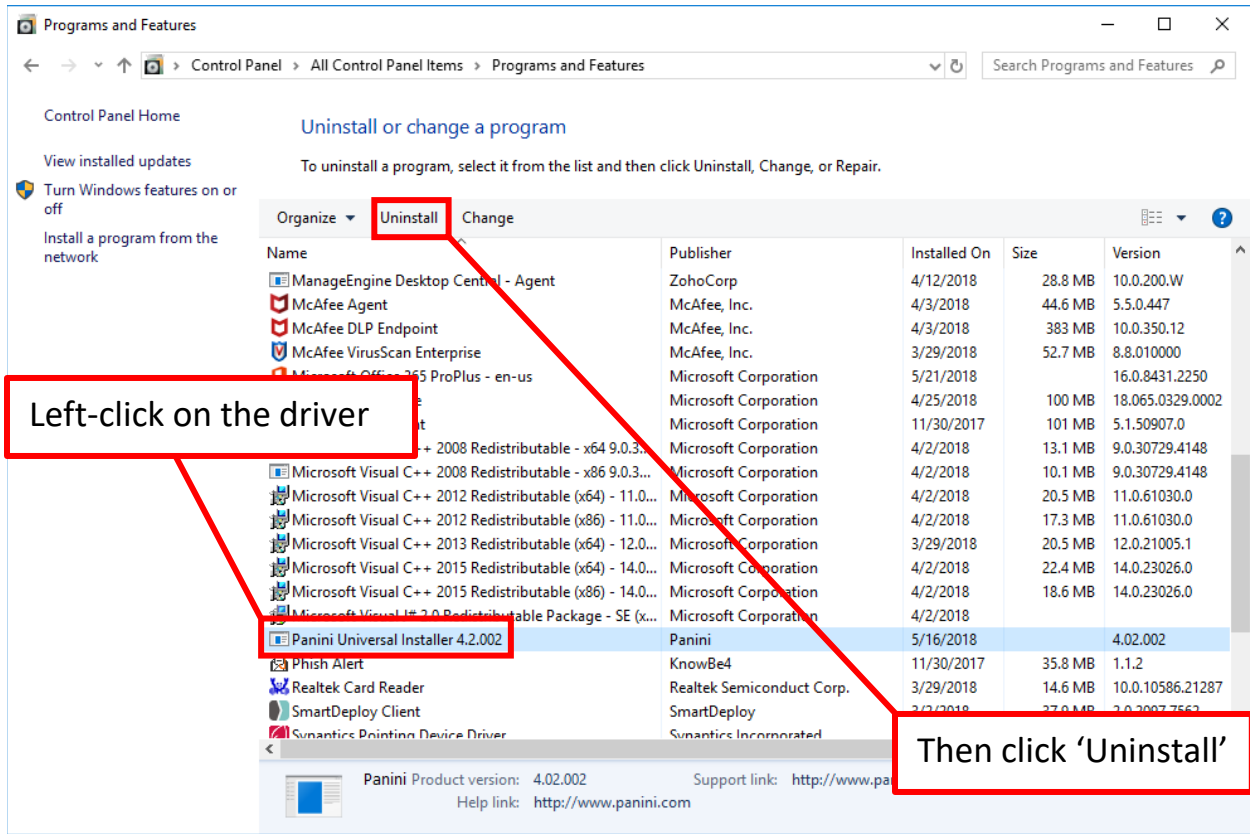
2. If Control Panel is in the Category View, under the Programs category, select 'Uninstall a program'.



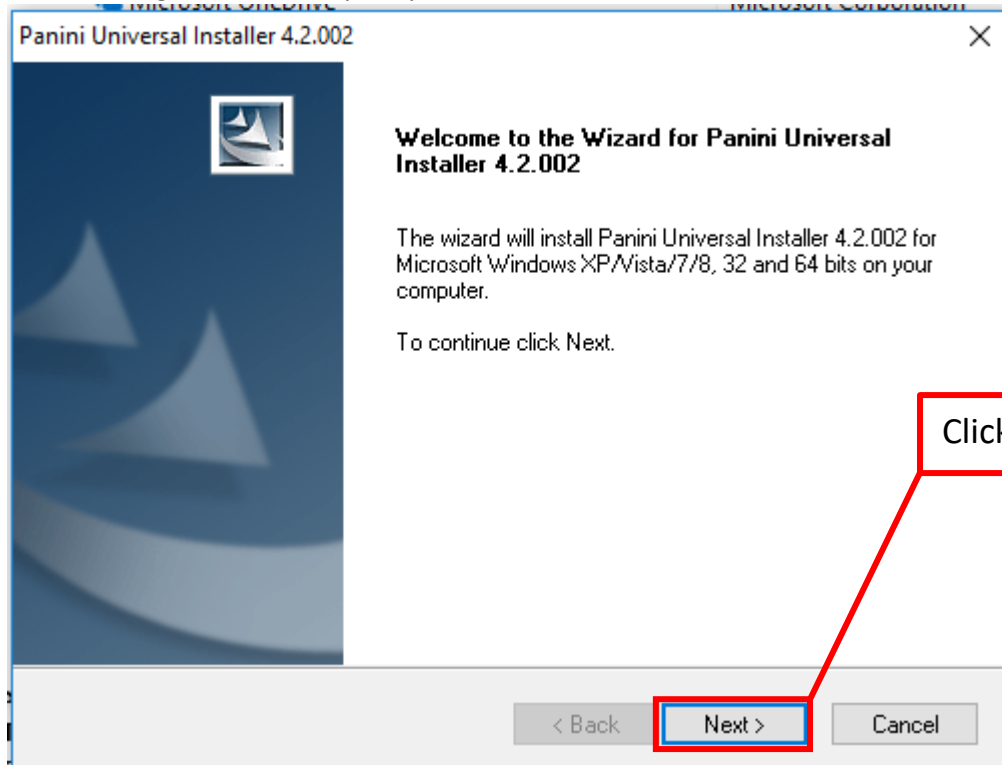
3. If your Control Panel View is broken down do individual icons, then select 'Programs and Features'.



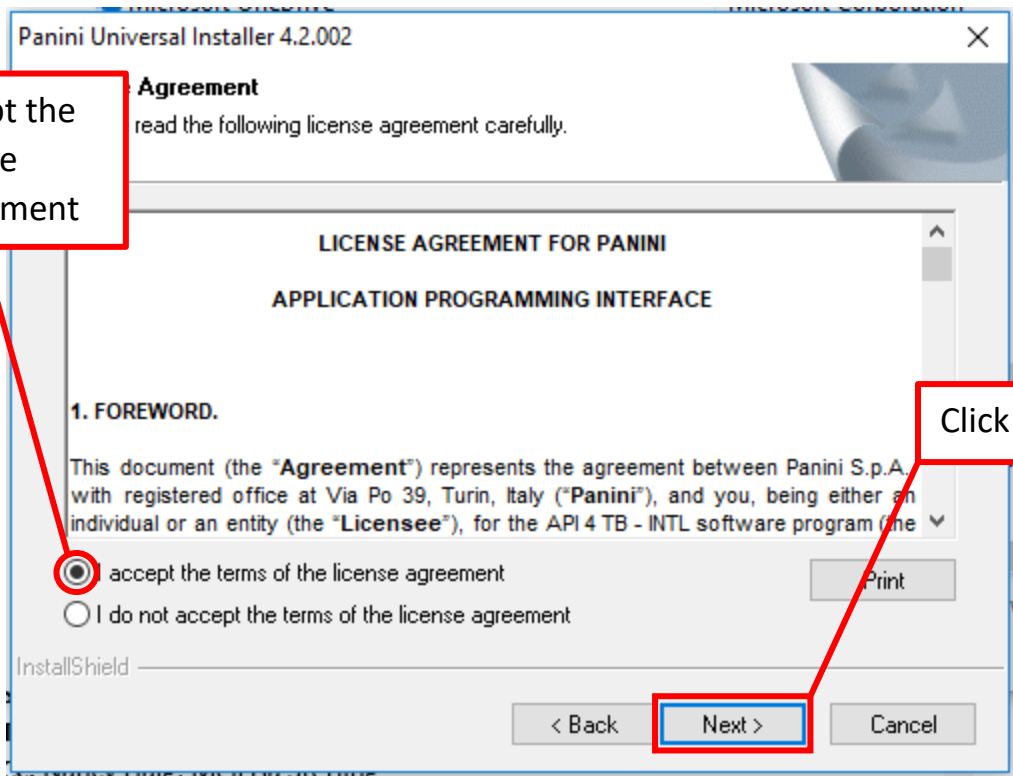
4. Left-click on 'FIS DCC Driver Package' in the list then select 'Uninstall'



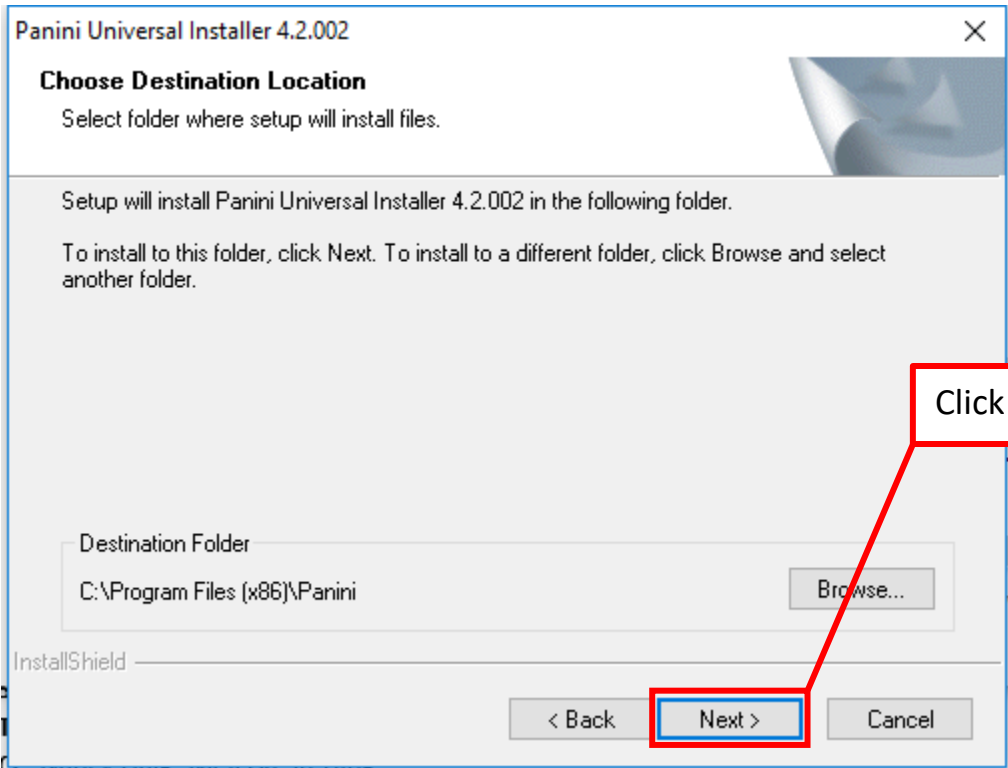
5. Proceed through the series of prompts



Accept the license agreement



Click Next



Click Next

Panini Universal Installer 4.2.002



### InstallShield Wizard Complete

The InstallShield Wizard has successfully installed Panini Universal Installer 4.2.002. Before you can use the program, you must restart your computer.

Yes, I want to restart my computer now.

No, I will restart my computer later.

Remove any disks from their drives, and then click Finish to complete setup.

< Back

Finish

Cancel

Select the top option

Click Finish